
Laplink Gold Administrator's Guide

Copyright Notice

No part of this publication may be reproduced, transmitted, transcribed, stored in a retrieval system, or translated into any human or computer language, in any form or by any means, without the express written permission of Laplink Software, Inc, 10210 NE Points Drive, Suite 400, Kirkland, WA 98033, U.S.A.

Trademarks

Laplink, the Laplink logo, SpeedSync and SmartXchange are trademarks or registered trademarks of Laplink Inc.

Acrobat and the Acrobat logo are trademarks of Adobe Systems Incorporated or its subsidiaries and may be registered in certain jurisdictions.

Other brand and product names are trademarks or registered trademarks of their respective holders.

Patents

SpeedSync™ U.S. Patent Number 5,446,888

This product may contain one or more of the following licensed products: RSA Data Security, Inc. MD5 Message-Digest Algorithm. Copyright © 1991-2, RSA Data Security, Inc. Created 1991. All rights reserved. ZLIB general purpose compression library, version 1.0.4. July 24, 1996. Copyright (c) 1995-1996 Jean-loup Gailly and Mark Adler.

Technical Support Contact Information

World Wide Web: Visit <http://www.laplink.com/support/>

Worldwide: Visit www.laplink.com/world/ on the Laplink web site for a list of international support numbers.

Laplink® Gold

© 1986–2004 by Laplink Software, Inc. All rights reserved
10210 NE Points Drive

Suite 400

Kirkland, WA 98033 U.S.A.

Laplink® Gold 12.0 User's Guide

© 2004 Laplink Software, Inc.

Laplink Gold Administrator's Guide

4	Laplink Gold Administrator's Guide- Overview
5	System Requirements for Using Laplink Gold
7	Installing Laplink Gold
11	Configuring Laplink Host
13	Default Menu Options
16	Creating Automated Installations
25	Performing Automated Installations
26	Setting Up a Global Address Book Database

Laplink Gold Administrator's Guide- Overview

This administrator's guide is a supplement to the user's guide, which provides detailed information regarding product functionality, connection types, the address book, security and troubleshooting. The user's guide can be installed along with the product, and is also available at www.laplink.com.

This administrator's guide has three goals: First, to provide detailed information about Laplink products, from installation methods through software configuration. Second, to function as a step-by-step guide to preparing an installation package for use in automated software deployment. Third, to explain how to make a global address book available to all users.

This guide is divided into seven sections:

System Requirements for Using Laplink Gold

Outlines the software and hardware requirements for installing and using the Laplink Gold software, including connection specific requirements.

Installing Laplink Gold

Explains the installation process in detail, describing how different choices made during installation affect the application's function and use.

Configuring Laplink Host

Outlines the installation defaults and settings used during the installation of the Laplink Host software. Explains Menu Options, password-protection and general default configuration settings.

Creating Automated Installations

Expands on the configuration discussed in the previous section to build automation files used in Laplink Gold. Outlines which files control which behavior, and how to pull these files together to build an installation package.

Performing Automated Installations

Discusses different types of automated Laplink Gold installations, and how to use command line and switch options with the installation package. Also discusses using batch files, as well as using Laplink Gold with SMS for scheduled automated installations.

Setting up a Global Address Book Database

Provides the necessary information that must be entered in your database, and how to connect to that database in Laplink. Also explains exporting and importing the database, along with necessary privileges for each.

System Requirements for Using Laplink Gold

Before you begin setting up Laplink Gold, make sure you have the necessary hardware and software. Since Laplink lets you connect in many different ways, the requirements depend on how you plan to connect.

Make sure all computers using Laplink meet the minimum software and hardware requirements, and the connection methods and services you want to use are available on each computer.

General requirements for each computer:

- Microsoft Windows 98SE, Me, NT 4.0, 2000, XP, or 2003.
- Intel or Intel-compatible 486/100 processor (or higher)
- At least 16 MB of memory (24 MB recommended)
- At least 23 MB of available hard disk space (for a complete installation)
- VGA monitor (or better recommended)
- Latest video display adapter drivers from PC or display adaptor manufacturers (recommended).

Requirements for Internet Connections.

- 1 Active internet connection on both host and guest computers. It is preferable to have a persistent Internet connection on the host machine (at least), unless the host can be manually connected to the internet in preparation for connection.
- 2 A known, public IP address for host, or a unique name published to the Laplink ILS server.

NOTE There are multiple solutions for accessing a Laplink host computer behind a firewall. Please refer to the Laplink Gold 12.0 User Guide for more details, or visit www.laplink.com/support.

Requirements for Laplink Everywhere Connections

- Active internet connection on both host and guest computers. It is preferable to have a persistent Internet connection on the host machine (at least), unless the host can be manually connected to the internet in preparation for connection.
- Both Laplink Host and Laplink Everywhere Host must be installed on the host PC for maximum connection flexibility. Laplink Secure VNC installation on the host is optional.

NOTE If you have difficulty establishing Laplink Everywhere connections, try disabling any proxy software or virus scanning software that interfaces with Outlook or Outlook Express.

Requirements for modem communication

- Dedicated phone line for each PC, preferably not a fax line.
- A Windows-compatible modem, preferably not a controllerless, software-based modem (WinModem). This modem should be tested for functionality using other Windows applications (Dial-Up-Networking, Telnet, etc).

... System Requirements for Using Laplink Gold

Requirements for network communication

- For IPX connections: Client for Microsoft Networks or Client for NetWare Networks (both included in Windows)
- For TCP/IP connections: Windows Sockets included in most versions of Windows.

Requirements for Dial-Up Networking communication

- The guest computer must have the Dial-Up Networking feature of Windows installed, with a functional Dial-Up Networking connection to the appropriate server.
- The host computer must be running a dial-up server program, or must be accessible on a network via dial-up server that supports incoming Dial-Up Networking connections. Dedicated dial-up servers include Novell NetWare Connect and Shiva NetModem. Dial-up server programs include the Dial-Up Networking server included with the Dial-Up Networking server included in Windows 98, Windows NT Remote Access Server, and Windows 2000/XP/2003 Routing and Remote Access Server (RRAS).

Requirements for cable communication

- For serial connections: a Laplink serial cable and an RS-232 serial (COM) port on each computer. Serial connections are supported on all Windows platforms.
- For parallel connections: A Laplink parallel cable and a parallel (printer) port on each computer. This is supported in Win98 and ME only.
- For USB Connections: A Laplink gold USB 1.1 cable and an available USB port on both computers. No added USB drivers are required when using Laplink Gold versions 11.5 or higher, using a Laplink gold USB 1.1 cable. Supports Windows 98/ME/2000/XP and 2003.

TIP In order to allow connections to older versions of Laplink still using USB Network Cable drivers, older versions should be upgraded to version 11.5 or higher.

Requirements for wireless communication

- Infrared ports and devices supported by the Windows Infrared communications driver (IrDA), version 1.0 or 2.0. The driver must be installed on both computers.
- Infrared devices such as the Extended Systems JetEye Infrared PC Interface (baud-switchable only). These devices must be configured in Windows to work in Laplink.
- Built-in infrared devices, including Fast Infrared (FIR), found on some models of laptops. Check your hardware documentation for details.

Wireless connections are only supported for use with Win98 and Windows ME.

Requirements for CAPI 2.0/ISDN communication

- An ISDN adapter with a CAPI 2.0-compliant driver on both ends of the connection
- An ISDN line

NOTE CAPI 2.0/ISDN is a standard popular in Europe, and is not typically used in the United States.

Requirements for using Voice Chat

On each computer, you will need:

- A sound card or sound device
- A full duplex sound card driver is recommended, if available.
- Speakers or headphones
- A functional microphone

Installing Laplink Gold

Installing Laplink Gold 12.0 and Laplink Host is quick and easy. A clear understanding of the different options offered during the installation process will ensure that the desired functionality is installed.

Laplink Gold 12.0 allows you to transfer files, run remote control sessions, and much more, all directly from your desktop. Laplink Gold 12.0 is designed for individuals who need to remotely control other machines from time to time, such as support or IT teams, as well as users connecting from the road.

Laplink Host allows only inbound connections. In other words, it does not allow the user to connect out or remotely control other Laplink computers, but it does allow inbound Laplink connections, which allows the full range of Laplink capabilities. Laplink Host is designed for desktops you need to connect to and control remotely, without providing the capability for them to connect to or control other Laplink computers.

Product installation for Laplink Gold 12.0 and Laplink Host is nearly identical. These instructions explain the installation, and point out the differences and options available in each.

- **To install Laplink Gold from a downloaded file:**

Double-click on the installation file in the folder where you saved it when downloading Laplink Gold.

If you are installing Laplink Gold 12.0, the file will be named:

LaplinkGold12.EXE

If you are installing Laplink Host, the file will be named:

Laplinkhost12.EXE

- **To install from CD-ROM:**

Insert the Laplink CD-ROM in the CD drive. The CD will autorun, and bring up the Laplink setup screen.

If for some reason, the CD does not auto-run, the name of the files to install from the CD are the same as the two listed above. Locate and double-click on this file to begin the installation.

Standard Installation

These instructions outline the installation options available when installing.

NOTE Accepting the defaults when installing Laplink software uses the most common installation options. It is also very easy to add components not included during the initial installation simply by running the setup program again. All configuration options can be changed post-installation as well.

Welcome screen

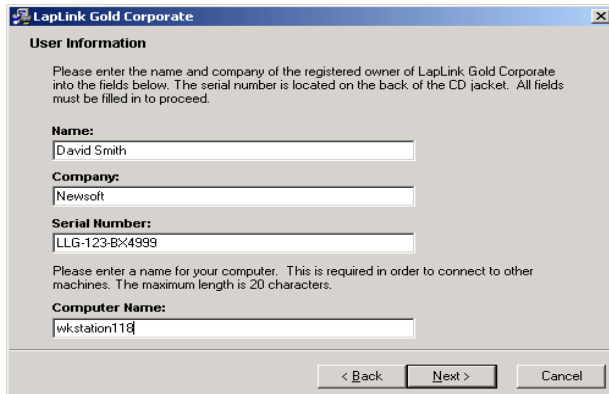
Welcomes you to the Laplink Gold software installation program. Follow the instructions listed, and click Next when ready.

License

Carefully read the single-user license agreement, and when ready, check the Accept option, and click on the Next button to proceed with installation.

User information

Enter the user information on this page. Input the serial number provided with your Laplink software.



The screenshot shows a dialog box titled "Laplink Gold Corporate" with a sub-header "User Information". The text inside reads: "Please enter the name and company of the registered owner of LapLink Gold Corporate into the fields below. The serial number is located on the back of the CD jacket. All fields must be filled in to proceed." There are four input fields: "Name:" with "David Smith", "Company:" with "Newssoft", "Serial Number:" with "LLG-123-BX4999", and "Computer Name:" with "wkstation118". Below the fields is a note: "Please enter a name for your computer. This is required in order to connect to other machines. The maximum length is 20 characters." At the bottom are three buttons: "< Back", "Next >", and "Cancel".

NOTE When installing Laplink Host, the Serial Number will be entered automatically.

The Name and Company information is pulled from the registry, and automatically entered into these fields.

The Computer Name information is obtained in the following order:

- 1 First, Laplink Gold looks to see if there is a previous installation of Laplink on the computer, and if one is present, uses the computer name found there.
- 2 Second, it searches Windows for this computer's network name.
- 3 Last, it enters the *user* name of the person currently logged into Windows as the computer name.

It also allows you to manually change the computer name. This is the *Laplink* computer name, and won't affect network connections on that machine.

NOTE The Laplink computer name must be unique.

Destination Location

Provides you a default install path for your Laplink Gold software, but also allows you to change the installation location if you choose.

NOTE If a previous installation of the same version of the Laplink Gold software is detected, Laplink requires that you install the new software to the same path.

NOTE If a previous installation of an earlier version of Laplink software is detected, Laplink requires that you uninstall it prior to installing Laplink Gold.

When finished choosing a path, click Next.

Select Components

Next, you are asked to choose the Laplink components you wish to install on this desktop.

Laplink Gold 12.0- Installs the main Laplink Gold software, either Laplink Gold 12.0 or Laplink Host.

User Documentation- Installs the Laplink Gold 12.0 User Guide (PDF) on to the computer.

Remote Install- (*Available only in the Laplink Gold 12.0 installation*) Installs software to allow remote installs to be performed from this computer to other computers.

NOTE *Remote Install* is an installation method that allows users to push the Laplink installation software from one computer to another, using a serial cable as a connection. This is primarily used for installations to machines that do not have a CD-ROM drive, and no Internet or network access. Install this component only if you need to install Laplink Gold to computers that have no other way of obtaining the installation file. You can always add this functionality later if you choose.

Scheduler- (*Available only in the Laplink Gold 12.0 installation*) *Laplink Scheduler* allows you to schedule file transfers and other procedures, using Xchange agents, and have them occur automatically when you are away from your

... Installing Laplink Gold

computer, such as late at night or on weekends. Unless you need these scheduled connections, do not install Scheduler. You can always add this functionality later if you choose.

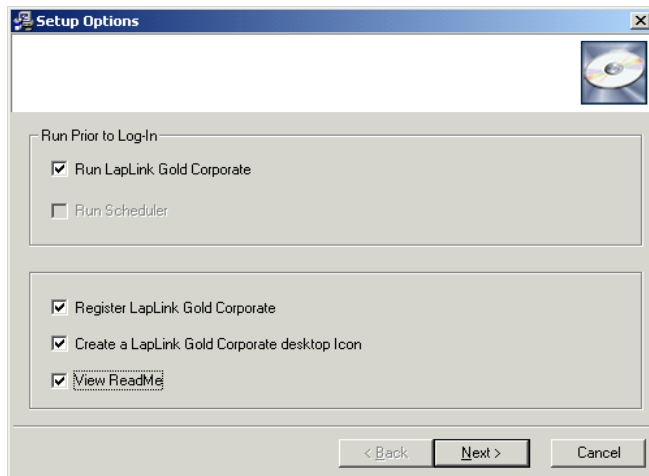
Start Installation

Next, a confirmation screen allows you to review your choices before proceeding. If you'd like to make a change, click the Back button to go to that selection.

When ready, click Next to begin copying the files for the Laplink Gold software.

Setup Options

After copying files, setup allows you to configure Laplink on this desktop.



Run Prior to Log-In

Run Laplink Gold 12.0- Allows you to run Laplink prior to a user logging on to the machine, which enables remote control access when the end user is away from the office or not

logged into the computer. This is required to allow remote rebooting of the host.

Run Scheduler- Runs the Scheduler application prior to login, making it available when you log into Windows.

NOTE Options not installed or unavailable will appear greyed out.

Register Laplink Gold 12.0

Checking this box will open your browser and allow you to register your Laplink Gold product online.

Create a Laplink Gold 12.0 desktop icon

Places a Laplink Gold icon on your desktop.

View ReadMe

Opens the Laplink Gold README file for your review.

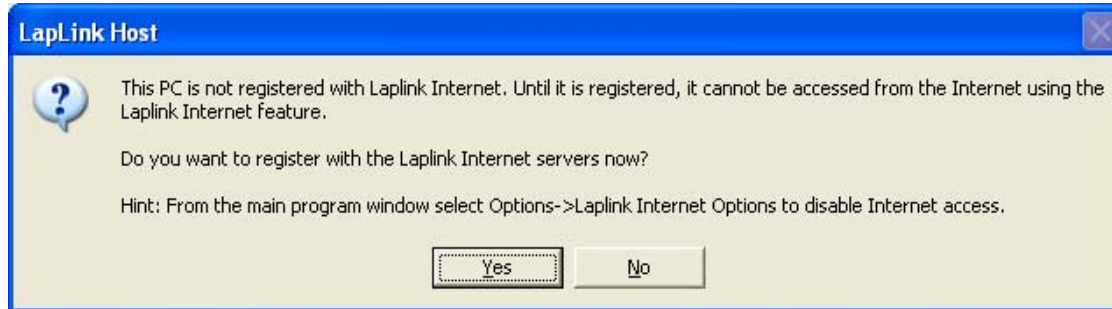
Installation Complete

The next screen will let you know your installation was successful. Click Finish at this screen, and you will receive a notice that your computer will need to be restarted to complete the installation. Clicking OK will reboot your computer immediately. Clicking Cancel will allow you to return to your desktop.

NOTE After installation, your computer will need to be restarted to before you will be able to use your Laplink software.

When Running Laplink software for the First Time

After installation, when you first run your Laplink software, you will receive a pop-up message asking if you'd like to register with Laplink Internet.



Laplink Internet allows connectivity using any persistent Internet connection, and allows you to securely bypass firewalls automatically. To learn more about this service, see the Connecting by Laplink Internet section of the Laplink Gold User's Guide. Later in this manual, in the "Enabling

Laplink Internet" section, automating this registration process is outlined. If you use this automated process, your users will simply need to click Yes at this screen to register with the Laplink Internet service.

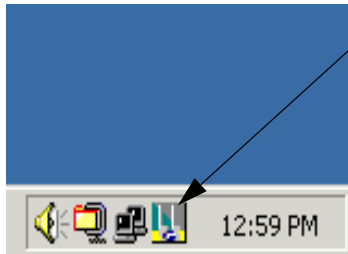
Configuring Laplink Host

This section explains the software defaults, user interface and configuration options available using Laplink Host. Understanding these options will help you to design a desktop configuration that best suits the needs of the user.

NOTE This chapter deals solely with the Laplink Host. To learn more about Laplink Gold 12.0's capabilities, including detailed troubleshooting, connection information, service options and much more, refer to the Laplink Gold 12.0 User Guide.

Laplink Host Installation Defaults

The Laplink Host software installs with default settings which are unique to the Host version. You will need to understand these default settings so that you can configure Laplink Host.



Laplink Host icon- Double-click on this icon on the Windows System Tray/Status Area to open Laplink Host.

Laplink Host does not appear on the Taskbar- When first running Laplink Host, you may not notice it is running, because it defaults to display only in the Windows Status Area. Double-clicking on this icon will bring up the Laplink Host user interface.

1 **Local Security Password**- By default, Local Security is enforced. This means you will need a password to access many of the configuration options, and to shut

down the application. The default password is **Admin**. Like all passwords, it is case-sensitive.

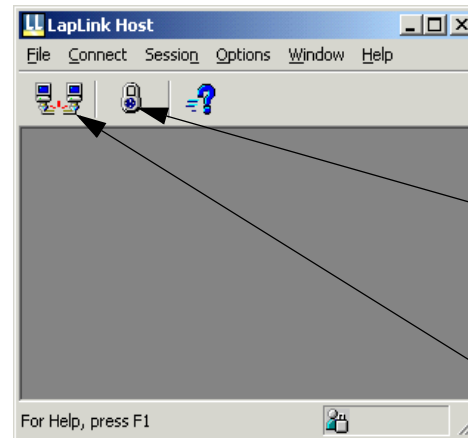
2 **Log-In List**- Laplink Host has a default user in the Log-In List, though these credentials can be changed.

- Log-In Name: Admin

- Password: Password (case-sensitive). Change this password to ensure security if you plan to create automated installations. See "[Creating Automated Installations](#)" for more information.

Laplink Host User Interface

When you open the user interface, it appears as a blank screen, with menus at the top.



Security icon

Disconnect icon

. . . Configuring Laplink Host

By default, some options are password-protected. For instance, if you click the Security icon, you will be asked to

enter a password. The next section outlines the default access levels for each Menu.

Default Menu Options

Laplink Host installs with certain defaults in place. Depending on how you set the menu options, you can choose to allow the user of Host to configure these options themselves, reserve that control for the technicians who will con-

nect to these machines, or pick and choose your control options.

Below is a list of the controls that defaults when Laplink Host is installed, and whether each option is automatically available, or requires a password.

If you click on this button...	Here are the options you will see, and what they do.	Does this option require a Local Security Password?
Disconnect	Allows the Laplink Host to disconnect computers connected to it	No
Security	Allows management of who can connect to this computer, local security, encryption and lockout options.	Yes.
Quick Steps	Enables the Quick Steps tool, which provides a pop-up explanation screen whenever you click on anything in the application	No
If you click on this menu...	Here are the options you will see, and what they do.	Does this option require a Local Security Password?
File	Exit is the only option under File. Allows you to close the Laplink Host application.	Yes
Connect	Publish My Internet Address to the ILS allows the user to publish their computer's name/address to an internet ILS server.	Yes.
	Disconnect - Allows the Laplink Host to disconnect computers connected to it	No
	Hang Up Modem - Disconnects modem on the host computer. Useful if a modem hangs upon disconnect, or if you want to make sure the modem is disconnected before reconnecting.	No
Session	No options available for Host version.	---

... Default Menu Options

Options		
	Remote Control - Allows guest reboot controls and other options.	Yes
	Printer Redirection - Allows printing to be redirected to other computers across a Laplink connection..	No
	Text Chat - This option allows the user to open a Text Chat window to be opened whenever a remote user sends a message.	No
	Voice Chat - This option allows the user to change microphone, volume and sound cards, and other voice chat options.	No
	Connect - Allows the user to change connection alerts, autodisconnect features and other connection options.	No
	Program - Enables the user to control whether icons appear on in the Windows Status Area and Taskbar, show warning messages, and more.	Yes
	Internet Directory - Allows the user to publish their internet address to the ILS server, to make this machine available to other Laplink users.	Yes
	Laplink Everywhere Options - Allows the user to enter a user name and password to automate a Laplink Everywhere connection. Also allows users to enable incoming LLE connections.	Yes
	Address Book - Allows the user to create new address book entries, manage Local and Global folder entries, and, if enabled, import and export connections.	Yes
	Security - Allows management of who can connect to this computer, local security, encryption and lockout options.	Yes
	Computer Name - Allows the user to change the Laplink Computer Name, the name other Laplink computers use to connect.	Yes
	Port Setup - Allows the user to set up and configure different ports for connections.	Yes
	Logging - Allows the user to create different Laplink activity logs, such as file transfer, connections, and more.	No

... Default Menu Options

Window	Open Print Redirection- Allows Print Redirection to a computer the Host is connected to.	No
	Open Text Chat- Opens a Text Chat session when connected to a remote computer.	No
	Open Voice Chat- Opens a Voice Chat session when connected to a remote computer.	No
	Cascade, Tile Side-by-side, Tile Vertical and Arrange Icons are all options allowing you to change the Window arrangement on your desktop.	No
	Close All- Allows user to disconnect all incoming connections to their computer	No
Help	Help Topics- Allows the user to access the Help tools for Laplink Host.	No
	Quick Steps- Enables the Quick Steps tool, which provides a pop-up explanation screen whenever you click on anything in the application.	No
	Check for Special Offers- Launches your browser and goes to Laplink's website to check for the latest offers and upgrades.	No
	About Laplink Host- Application information.	No

Creating Automated Installations

Laplink administrators can configure Laplink, then copy that specific desktop configuration to other desktops through special automation files created in the Laplink installation and configuration process.

Laplink allows the data from four different automation files to be used as templates. Each of these files contain different parts of the installation and configuration information. As you configure Laplink, do so with the idea that the installation you are performing on your desktop will be the standard installation template for all your desktops using Laplink. The control options you enable will be the options you will have.

When these files are placed in the root of the directory from which you are installing Laplink, along with the Laplink installation file, the values in these files will become the defaults for that installation. You can use none, all, or any combination of the 4 configuration files when performing automated installations. This section will discuss these four files, and how to use them to create an installation package.

The files required in your installation package are:

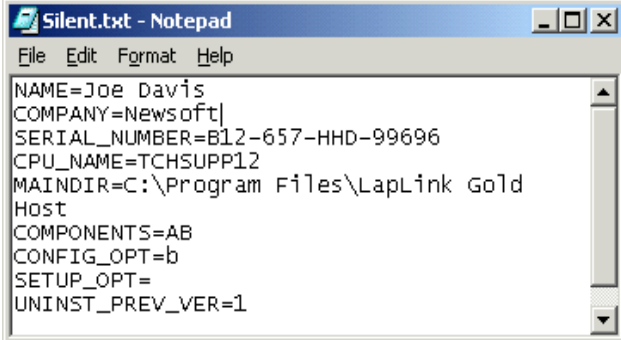
- silent.txt
- llgold.pbk
- llgold.pwd
- llw.ini
- either the Laplink Gold 12 installation file (Laplinkgold12.exe) or the Laplink Host installation file (Laplinkhost.exe)

Each of these files contain different pieces of the setup and configuration information.

The SILENT.TXT file

The SILENT.TXT is created during the installation of the Laplink Gold software. The file is placed into the same direc-

tory where you install Laplink Gold, and records the Component information, Configuration and Setup Options you chose during installation.



```
NAME=Joe Davis
COMPANY=Newssoft
SERIAL_NUMBER=B12-657-HHD-99696
CPU_NAME=TCHSUPP12
MAINDIR=C:\Program Files\LapLink Gold
Host
COMPONENTS=AB
CONFIG_OPT=b
SETUP_OPT=
UNINST_PREV_VER=1
```

The information in this file directly correlates to the installation screens and options that appear during installation. For example, in the file above, the line

COMPONENTS=AB

corresponds to the screen seen below during installation.



... Creating Automated Installations

SILENT.TXT Table

This table outlines how each line of the SILENT.TXT file corresponds to the options and choices made during the installation of the Laplink Gold software. While this file is

automatically generated during the installation process, it can be manually edited, then used on other Laplink Gold installations to facilitate pre-configured installations.

SILENT.TXT line.	Line Options?	Correlates to this function during the installation.	Required field during manual installation?
NAME	None	The Name field in the User Information screen.	Yes
COMPANY	None	The Company field in the User Information screen.	Yes
SERIAL_NUMBER	None	The Serial Number field in the User Information screen.	Yes
CPU_NAME	None	The Computer Name field in the User Information Screen.	Yes
MAINDIR	None	Installation path selected in the Destination Location screen.	Yes
COMPONENTS	A	The Laplink Gold 12.0 or Laplink Host checkbox in the Select Components screen.	No*
	B	The User Documentation checkbox in the Select Components screen.	No*
	C	The Remote Install checkbox in the Select Components screen (Available only when installing Laplink Gold 12.0)	No*
	D	The Scheduler checkbox in the Select Components screen. (Available only when installing Laplink Gold 12.0)	No*
		*At least one component must be selected for installation to continue.	
CONFIG_OPT	A	The Run Laplink Gold checkbox in the Run Prior to Log-In section of the Setup Options screen.	No
	B	The Run Scheduler checkbox in the Run Prior to Log-In section of the Setup Options screen. (Available only when installing Laplink Gold 12.0)	No

	lower-case a or b	Indicates that the checkbox in the Run Prior To Log-In section is greyed (unavailable). For example, if during installation, you chose not to install the Scheduler, the Run Scheduler checkbox under the Run Prior to Log-In would be greyed, as this component was not chosen for installation.	No
SETUP_OPT	A	The Register Laplink Gold 12.0 checkbox in the bottom half of the Setup Options screen.	No
	B	The Create a Laplink Gold 12.0 or Laplink Host Desktop Icon checkbox on the bottom half of the Setup Options screen.	No
	C	The View ReadMe checkbox on the bottom half of the Setup Options screen.	No
UNINST_PREV_VER	1 or 0	Automates the start of the uninstall process. If an automated install encounters a previous version, this command will stop the automated installation, and begin the uninstall. At this point, the end user would need to manually respond to the rest of the uninstall questions to complete the uninstall, and reboot the computer. When the computer restarts, the automated installation will begin again.	No

Configuring the SILENT.TXT file

TIP Before configuring files for use in the installation package, create a new folder for storing your installation package files.

NOTE For the purposes of this manual, the folder created is called **LLInstall**, and is placed on the desktop, but you can name and place this folder to suit your preferences.

- 1 Make certain the settings you've selected in the SILENT.TXT file are exactly what your group will need.
- 2 Copy the SILENT.TXT file, (located in the same directory you installed your Laplink software) to the new LLInstall directory just created.

- 3 Using the "**SILENT.TXT Table**" above as a guide, edit the SILENT.TXT file to include or exclude the installation options you want the group to have.

- 4 In the SILENT.TXT file, you'll see lines that read:

NAME=[Your name]

COMPANY=[Your company]

CPU_NAME=[Your computer name]

This information was captured during the Laplink software installation, and should reflect *your* computer name, and other computer information. During automated installations, Laplink will use this computer information on other computers, unless it is manually changed or removed.

If the Name, Company and CPU Name fields are blanked in the SILENT.TXT file, the information will be collected automatically from the computer to which you are installing

... Creating Automated Installations

Laplink. For example, if you want the computer name of the target machine to be used, modify the SILENT.TXT file to read: **CPU_NAME=**

This is only one of three options for determining computer name.

Determining CPU Name

Laplink allows users to define the CPU_NAME field in three ways. Each option is defined in detail below.

CPU_NAME=[blank]

If the CPU_NAME field is blank (after the equal sign), and Laplink is being installed on a computer for the first time:

- 1 Laplink will try to obtain the network name of this computer from Windows.

OR: If the network name is unavailable:

- 2 Laplink will enter the user name of the person currently logged into Windows on this computer.

If the CPU_NAME field is blank (after the equal sign), and there is a previous installation of Laplink software on this computer:

- 1 Laplink will use the Computer Name found in the LLW.INI file;

OR: if that fails

- 2 Laplink will try to obtain the network name of this computer from Windows.

OR,; if that fails,

- 3 Laplink will enter the user name of the person currently logged into Windows on this computer.

CPU_NAME=_NETWORKNAME_

If this line is used, Laplink will:

- 1 Try to obtain the network name of this computer from Windows.

OR: If unable:

- 2 Laplink will enter the user name of the person currently logged into Windows on this computer.

NOTE This field is case-sensitive, and requires upper-case letters.

CPU_NAME=_USERNAME_

If this line is used, Laplink will:

- 1 Enter the user name of the person currently logged into Windows on this computer.

NOTE This field is case-sensitive, and requires upper-case letters.

NOTE Make sure to spell text correctly. Any misspellings will be interpreted as a computer name, and will be entered on every computer where the SILENT install is run.

LLGOLD.PBK file

The LLGOLD.PBK file is located in the [WINDOWS]\TSI32 directory after installing Laplink Host or Laplink Gold 12.0. It contains all the Address book entries.

Add all the addresses of users you'd like

Once you've completed your setup of address book entries you can use this file to share them with other Laplink users.

Configuring the LLGOLD.PBK

There is no manual configuration of the LLGOLD.PBK file required. When the Address Book is ready, close Laplink Host software, and follow the steps below.

... Creating Automated Installations

- 1 From the [WINDOWS]\TISI32 directory, copy the LLGOLD.PBK to the LLInstall.
- 2 Rename this copy in the LLInstall directory LLCUST.PBK.

LLGOLD.PWD file

The LLGOLD.PWD file contains information for the Log-In List, and the Local Security Password.

Both options are accessed by clicking the Security icon below the Connect menu. For more information, please review your Log-In List and Local Security options in the Laplink Gold 12 User Guide.

TIP Because you are creating an installation template of Laplink, think of configuring the access you will allow at the end-user's machine. What users would you like to have access to this machine? What should they have access to (Remote Control, Voice Chat, et cetera)? The Log-In list should include users who you want to have this level of access and control, such as your Help Desk or IT staff.

• The Log-In List

If you want to set up other computers to connect with Log-In List Only privileges, click on the Security icon, and select Log-In List. Make an entry for each group that may need access, such as IT or tech support. Each group can be given different access rights and privileges. Any users set up in the **Log-In List** will be saved in the LLGOLD.PWD file.

• The Local Security Password

Your Local Security Password is set in the Security settings, and saved to the LLGOLD.PWD file. It is important to set this password if you don't want your users changing the configuration settings you create for them. Remember, the default password is Admin (case-sensitive).

To learn more about the Log-In List and Local Security, refer to the Laplink Gold 12.0 User Guide.

Configuring the LLGOLD.PWD

There is no manual configuration of the LLGOLD.PWD file required. When you have added users to the Log-In list, and set the Local Security Password settings the way you want them to appear for the group, exit the Laplink software, and follow these steps:

- 1 From the [WINDOWS]\TISI32 directory, copy the LLGOLD.PWD to the LLInstall directory.
- 2 Rename this copied file in the LLInstall directory LLCUST.PWD.

LLW.INI file

The LLW.INI, located in the [WINDOWS]\TISI32\LLW directory, contains the post-installation software configuration information. Changes you make in the software will be saved in the LLW.INI file. This file can then be used as a default configuration in your installation package.

Configuring the LLW.INI file

Once you've configured the Laplink Host software the way you would like it to function on your group's computers, close Laplink Host, and follow the instructions below.

- 1 From the [WINDOWS]\TISI32\LLW directory, copy the LLW.INI to the LLInstall directory on your desktop.
- 2 In the new LLInstall directory, open the LLW.INI file you just copied.
In the LLW.INI, there are several important entries.

```
[GENERAL]
NAME=[Your name]
COMPANY=[Your company]
```

```
[Local Machine]
NAME=[your computer name]
```

... Creating Automated Installations

This information is captured during the Laplink Gold software installation, and should reflect *your* computer name, and other computer information. During automated installations, Laplink Gold will use this computer information on other computers, unless it is manually changed or removed.

- 3 To have Laplink Gold pull the information from the computer you are installing to, blank these lines after the equals sign. For example, under the [Local Machine] section, the line should read:

NAME=

Enabling Laplink Internet

The [Laplink Internet] section is an exception. In order to enable *Laplink Internet* on desktops using a remote installation, the fields below must be manually entered into the LLW.INI:

[Laplink Internet]

USERNAME=[Your Company User Name]

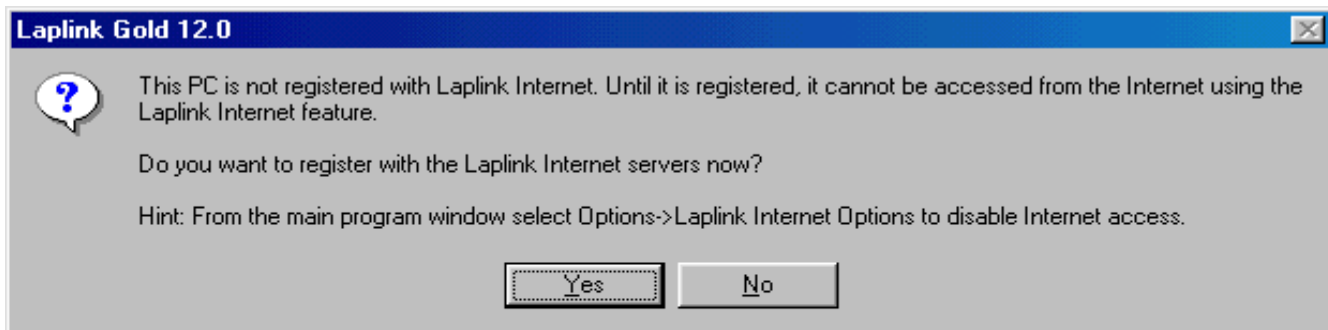
PASSWORD=[Your Company Password]

The correct username and password for your company must be entered in the above fields as well. This user name and password is a single corporate license, and will enable all desktops where Laplink Gold or Host is installed. If your company has purchased a license for Laplink Internet, this username and password will be provided with your software and other documentation. You can also contact Laplink support to obtain this information.

NOTE The above lines will automatically be removed from the LLW.INI file on each target desktop after the first successful login to Laplink Internet on that desktop.

After Installing Laplink Internet

If you've enabled Laplink Internet, the first time the end user logs on, they will receive the following pop-up screen below:



NOTE This screen is timed to go away after 15 seconds. If users click No, or don't click Yes while the popup screen is up, this screen will appear at startup until the user clicks Yes and successfully registers.

If the information entered in the previous section is correct, the user need only click the Yes button, and this will register

this user/desktop with Laplink Internet. End users will only see this screen once.

NOTE Laplink Internet is not available prior to login.

When Laplink is running as a service, Laplink Internet will not be available until the user logs in.

Final Step with LLW.INI

When finished, rename the LLW.INI file in your LLInstall directory LLCUST.INI.

Laplink Gold SMS files

Laplink works with Microsoft's System Management Service (SMS) to allow you to push your pre-configured installation package to desktops at scheduled times, offering great flexibility for installations.

NOTE The Laplink software supplies two files to be used in the creation of an SMS installation. The

Laplinkgold12.SMSPDF, and the **Laplinkgold12.SMS** files are found in the Laplink Gold 12.0 installation directory. Laplink Host does not contain these files. Install Laplink Gold 12.0 on a different computer, then copy these files to the LLInstall directory on your "installation package" computer.

Configuring Laplink Gold files for SMS

Follow the steps below to prepare your installation package for use with SMS:

If your company uses SMS version 1.0:

Copy the file called Laplinkgold12.SMSPDF from the Laplink Gold 12.0 installation directory to the LLInstall directory on your desktop.

In your LLInstall directory, rename the Laplinkgold12.SMSPDF to Laplinkgold12.PDF.

If your company uses SMS Version 2.0

Copy the file called Laplinkgold12.SMS from the Laplink Gold 12.0 installation directory to the LLInstall directory on your desktop.

Editing the Laplink Gold SMS file

Go to your LLInstall directory, and open the SMS file using a text editor such as Notepad.

There are two sections that affect installation, and where you may need to make edits.

[Typical]

In the Typical section, at the command line, it reads "Laplink12.Corp.exe". This command will run the Laplink Gold installation file on the targeted desktops. Users would see the installation Welcome screen, and would need to perform the installation manually using this method.

NOTE If you choose to install Laplink Host using this method, you must change the name in the command line to "**Laplinkhost12.EXE**".

[Automated]

This section supports the SILENT.TXT file switches for installing through SMS. By default, this option will silently install on the target desktops, using all parameters set in the SILENT.TXT file as well as all of the other information in your installation package, and reboot the target computers when finished.

NOTE If you choose to install Laplink Host using this method, you must change the name in the command line to "Laplinkhost12.EXE".

Laplink Gold Installation file

The last piece required to build your installation package is your Laplink Gold installation file.

... Creating Automated Installations

Locate the Laplink installation setup file for either Laplink Gold or Laplink Host, either on the CD or from download, and copy it to the LLInstall directory you just created.

TIP The installation file for Laplink Host is called Laplinkhost12.exe

TIP The installation file for Laplink Gold 12.0 is called Laplinkgold12.exe.

Installation Package Complete!

At this point, the installation package should be complete, and ready to use on other desktops. You should see up to six files in the LLInstall directory:

- The Laplink Gold Installation file you've chosen.
- LLCUST.PBK*
- LLCUST.PWD*
- LLCUST.INI*
- SILENT.TXT*
- Laplinkgold12.SMS file (only used for SMS installations)

Make sure all of the files you require are in your installation package.

*Any of these four configuration files can be used with the other package files, alone, or in any combination when making an installation package.

Command Line Options

Laplink Gold supports a set of command line options. One could place these commands in the Run line (Click Start, Run), or use a batch file.

The advantage of a batch file is ease of use; you can point users to the batch file in the LLInstall directory, have them

double-click on the file, and the configured installation would be installed on their computer automatically.

The command lines are:

•[Installation file]/S /M=[filename] /M5=[directory name]

Silent Mode

[Installation file] /S

Silent mode installs the software without any user input. The user's computer will reboot automatically when complete. Using the /S switch will bring in all the changes from your installation package.

NOTE The /S switch must be used in combination with the M=[filename] switch.

[Installation file] /M=[filename]

This switch points to a configuration file. Use the SILENT.TXT file in your installation package.

[Installation file] /M5=[directory name]

During installation, temporary files are written to the hard drive to a directory. On some locked-down machines with restricted privileges, these temporary files might fail to write, resulting in a failed installation. Use this command line option to specify a directory name to which the user has write privileges.

Using Command Line Switches

The most commonly used command line option, and the option that uses all of the files from your installation package, is the line below.

For Laplink Gold 12.0:

•[Installation file] /S /M=SILENT.TXT

NOTE The /S command MUST be used in combination with the /M=SILENT.TXT command, and must point to a SILENT.TXT file that contains a valid Laplink Gold serial number.

Final tips for configuring Laplink Host:

Hiding Laplink Gold

It is possible to configure Laplink Host so that it is invisible to the user. This can help avoid having the user make changes that affect connectivity. To hide Laplink Host:

- 1 In Laplink Host, from the Options menu, select Program Options. On the General tab, unselect the Show Laplink on the Windows Task Bar and the Show Laplink in the Status Area checkboxes.
- 2 Highlight the Laplink Host icon on the Windows desktop, and click Delete. This will not affect the Laplink Host program. (If this option was not selected during installation, you will not see this icon on the desktop.)

When you next start Laplink Gold, there will not be an icon on the desktop, in the status area or on the Task Bar. However, Laplink Host will be running and available for incoming connections.

You can still open Laplink Host with this setup simply by clicking Start, Programs, and clicking on Laplink Gold 12.0 Host.

Connecting at the Logon Prompt

Running Laplink prior to the logon prompt ensures that Laplink will be available whenever you need to connect.

In Laplink Host, from the Options menu, select Program Options, and click on the Advanced tab. Under the Automatic Laplink Startup section, check Always Start Laplink Before Windows Logon Prompt checkbox.

Rebooting the Laplink Host

Rebooting the Laplink Host is a useful tool that allows you to reboot machines remotely, and reestablish access through Laplink Gold when the reboot is complete.

In Laplink Host, from the Options Menu, select Remote Control. There are two options. You can choose to allow the guest to reboot, or always reboot upon disconnect.

Using Connect at the logon prompt and Rebooting the Laplink Host together can be valuable in a number of scenarios. For instance, you might have a computer that several users connect to, each with their own login, permissions and access. You could choose to Always reboot when guest disconnects, and Automatic Laplink Startup. In this scenario, one user will log in, do his work, then disconnect. Upon disconnect, Laplink will reboot the computer, and will be running at the logon prompt. The next user to connect will have to log in to Windows, ensuring privacy and security of all users.

Performing Automated Installations

Laplink Gold allows you to configure a single computer, then, through an automated process, install the Laplink Gold software onto other computers using these pre-configured settings. This section tells you how to pull all the pieces together to perform an automated installation.

Setting Up Automated Installations-A Review

The previous sections explained how to configure different areas of the Laplink Gold software, and where those changes are saved.

You must install and configure the Laplink Gold software on a single computer, with the idea that this configuration can be used on many computers.

The automation files are configured and placed in the install package directory. When performing automated installations, the files in the install package directory are picked up as defaults for that installation.

Your installation package is now ready for installation to other computers.

Installation Types

Command Line Installations

To create a Command Line install, copy the installation package to a local computer, or to an accessible network location. Begin the installation from the Run Command line, or from a batch file you create, using the command line that best suits your needs.

SMS (Push) Installation.

To create a SMS install, copy the installation package to a network location accessible to your SMS distribution server. To complete the setup of the SMS install, import the Package Definition File from your installation package. For more information about importing Package Definition Files, refer to your SMS Administration Guide.

Setting Up a Global Address Book Database

Laplink Gold allows you to set up a global address book database, and share connections saved in this database with Laplink users throughout your corporation. Creating a database for Laplink Gold's Address Book centralizes your connections, providing your Laplink users instant and easy access to the computer connection information they will need. Laplink Gold also allows users to make changes to the address book in Laplink Gold, and export them for others to use.

Setting Up Your User Database

Laplink Gold supports connections using many different database types (SQL, Jet, Oracle, etc.) This section will outline the tables that will need to be created in your database, and the definitions and parameters for each table.

NOTE These instructions are limited to the table setup required for use with Laplink Gold and Laplink Host. You should contact your database administrator or vendor if

you have any questions regarding database administration.

In your database, you must create a table named TSI_DF_ADDRESS in order to set up a connection between your database and Laplink Gold. The table below outlines the fields and definitions required in the TSI_DF_ADDRESS table when using Laplink Gold.

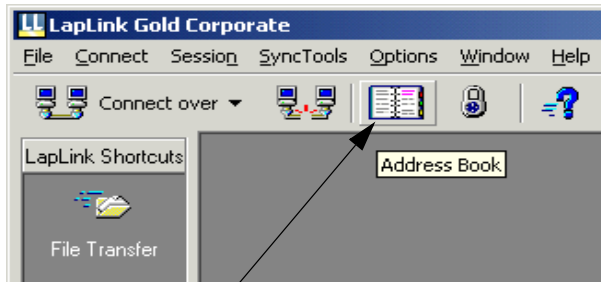
TSI_DF_ADDRESS Table Definitions

Column Type	Data Type	Length	Allow Nulls	Notes
id	int	4		Identity-auto-number
szComputerName	char	21		
szDescription	char	31	X	
szPhoneNumber	char	65	X	
szUserName	char	21	X	
szUserPassword	char	32	X	
connectionType	int	4	X	
flags	int	4	X	
szModemName	char	128	X	

... Setting Up a Global Address Book Database

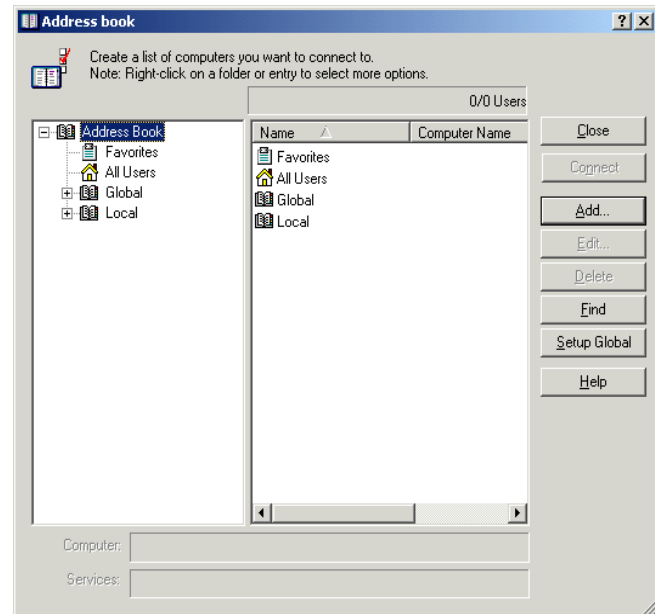
szCompanyName	char	41	X	
szSectionName	char	61	X	
szFolderName	char	1025	X	
szMemo	char	257	X	
szLLEUserName	char	41	X	
szLLEUserPassword	char	256	X	
szLLEMachine	char	41	X	
szDomain	char	65	X	

Once you've created a database with the TSI_DF_ADDRESS table as outlined above, you will be ready to use Laplink Gold to link to this database. If you don't already have information stored in your address book, you must begin by entering this information before it can be shared. For more information about address book entries, see chapter 3 of the Laplink Gold 12.0 user's guide.



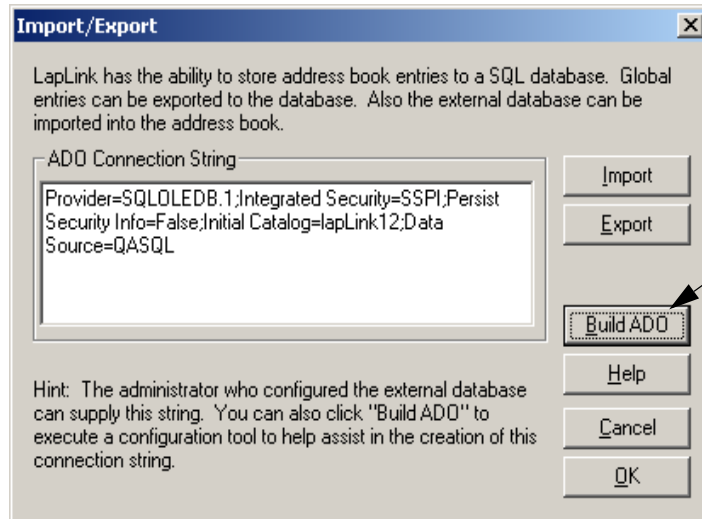
To use the Address Book, click on the Address Book icon on the toolbar,

You will see the Address Book screen below

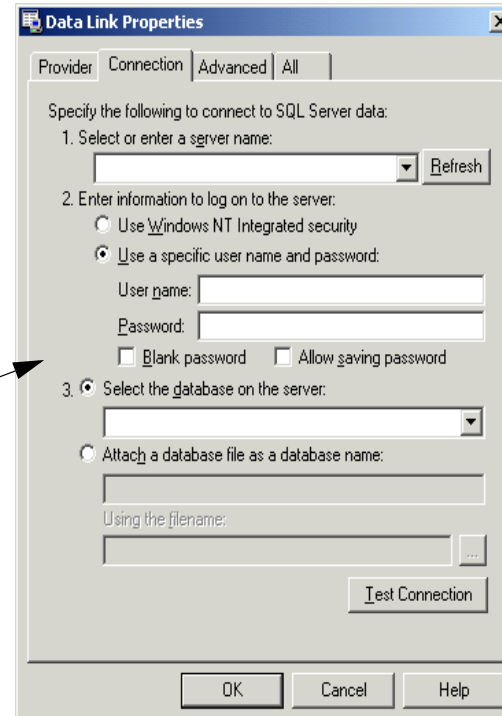


... Setting Up a Global Address Book Database

Setup Global-Importing and Exporting



When clicking on the Setup Global button in the Address Book, the Import/Export screen on the left appears. Laplink Gold 12.0 requires a connection to a database through an ADO string. You can enter it on the left, or click the Build ADO button, which will bring up the Windows Data Link Properties screen seen below.



Laplink Gold 12.0 invokes Microsoft's Data Link Properties utility to step you through the process of connecting to your database.

It is important to understand the capabilities of importing and exporting from the Address Book. Detailed information can be found in Chapter 3, Using the Address Book section of the Laplink Gold 12.0 User's Guide.

TIP For simplicity, the ADO string you've just built can be shared with other users via email.

... Setting Up a Global Address Book Database

Importing

Importing allows you to download a local copy of the Global Address book. As the Address Book gets updated by other users who might add or delete users or folders, importing allows the user to have the most up-to-date information.

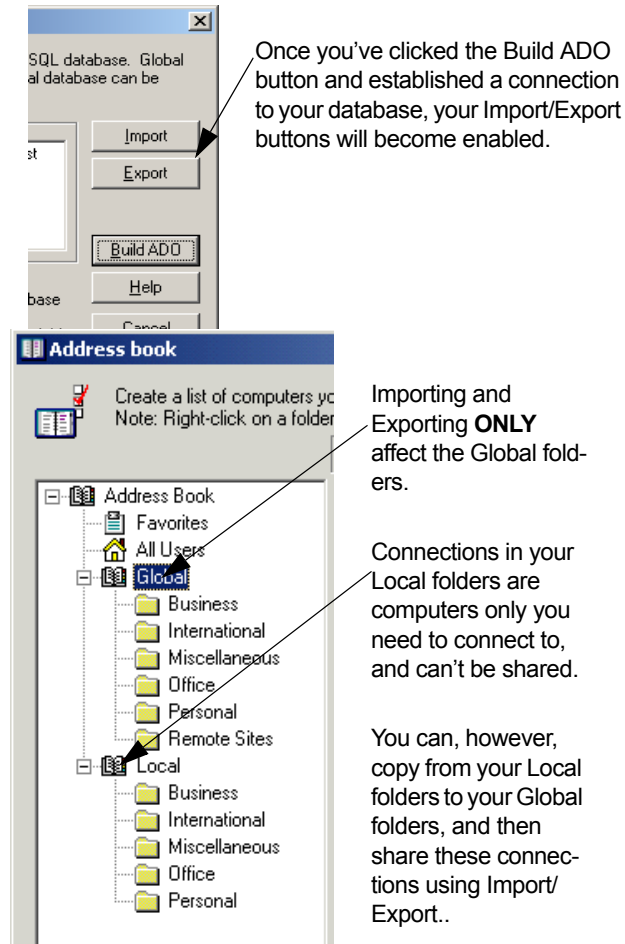
NOTE To import, you must have *read access privileges* to the database.

Exporting

Exporting allows you the capability of making changes to your address book, then Exporting those changes to the database. If you've made changes to your Global Address list, and you want to share these changes with other Laplink Gold users, you must first use Export to send those changes back to the main database. Then, other Laplink Gold users must use Import to receive the changes.

NOTE Exporting requires *write privileges* to the database.

CAUTION Exporting is primarily an administrative function. If you make changes to your Global address book, then Export it, those changes are permanent, both in your Address Book, and in anyone's Address Book who later imports it. For that reason, database administrators should carefully manage which users have Address Book Exporting capabilities.



... Setting Up a Global Address Book Database

NOTE Running Laplink as a service:

At this time, Laplink Gold 12.0 will not be able to connect to the SQL database when running as a service (E.g. before the Windows Login prompt). When Laplink starts as a service, it uses the security context of the machine, not of the user who eventually logs in. This causes problems when the SQL server attempts to authenticate the Laplink process, which is not tied to a particular user account.

For Windows XP computers, configure Laplink to start manually from Options->Program Options, advanced tab.

For all other operating systems, add the Laplink computer's machine account to the list of authorized users on the SQL sever. Then give the account the appropriate read or write privileges.

Here's a sample computer name in the correct format:

\Domain\workstation007\$. Note: The \$ is necessary.